



Samba – heiße Rhythmen aus Brasilien, die Deine Hüfte in Bewegung bringen. Samba ist aber viel mehr als nur ein Tanz. Samba ist ein ganzes Lebensgefühl!

Woher kommt es? Samba hat seine Wurzeln in Afrika und wurde von versklavten Menschen nach Brasilien gebracht. Dort entwickelte er sich zu einem Ausdruck von Freiheit und Lebensfreude.

Was macht Samba so besonders? Die energiegeladenen Rhythmen und die fröhliche Atmosphäre — einfach ansteckend!

Kann man Samba auch am Schlagzeug spielen? Klar, unbedingt! Auch wenn am Drumset einige der typischen Samba-Instrumente fehlen, kannst Du mit Deinem Groove für ordentlich Stimmung sorgen. Schnapp Dir Deine Sticks und probier's aus! Es divertido!

Samba – hot rhythms from Brazil that get your hips moving. And way more than just a dance, it's a way of life!

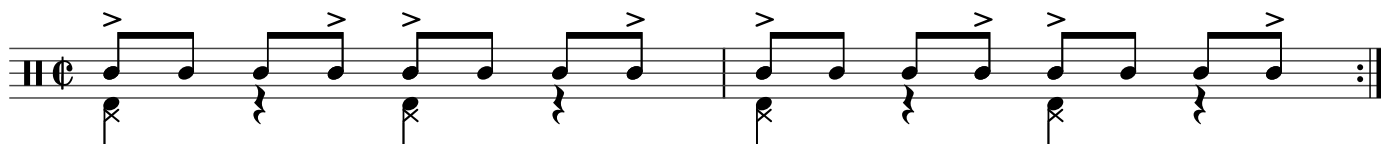
Where does it come from? It's not exactly known, but Samba has its roots in Africa and was brought to Brazil by enslaved people. There, it evolved into an expression of freedom and joy for life.

What makes Samba so special? The energetic rhythms and the cheerful atmosphere — simply infectious!

Can you play Samba on a drumset? Absolutely, even though some of the typical Samba instruments might be missing from a drum set, you can still create a vibrant groove that sets the mood. Grab your sticks and give it a try! Es divertido!

Street/carnival Samba

01



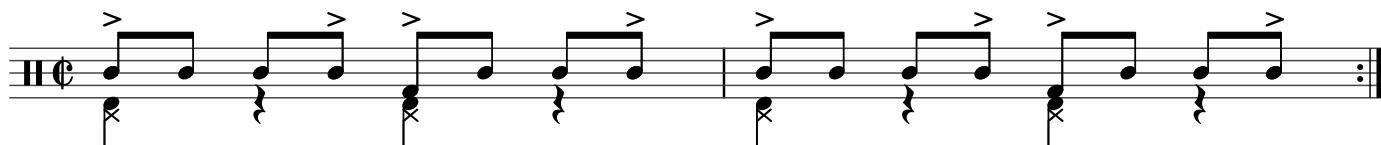
Variation I:

Street Samba mit Surdo*-Effekt auf dem Floor Tom [*eine spanische Bass Drum]

Variation I:

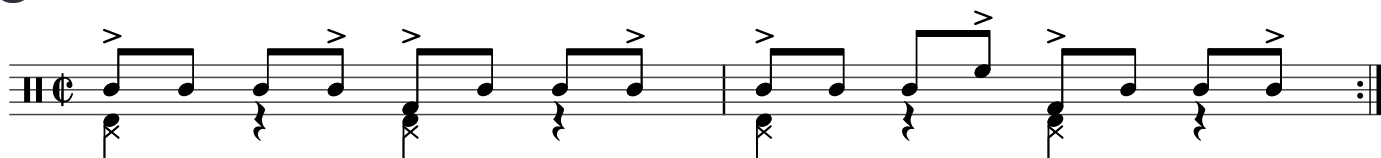
Street Samba with Surdo* effect on the Floor Tom [*a spanish Bass Drum]

02



Variation II

03



A

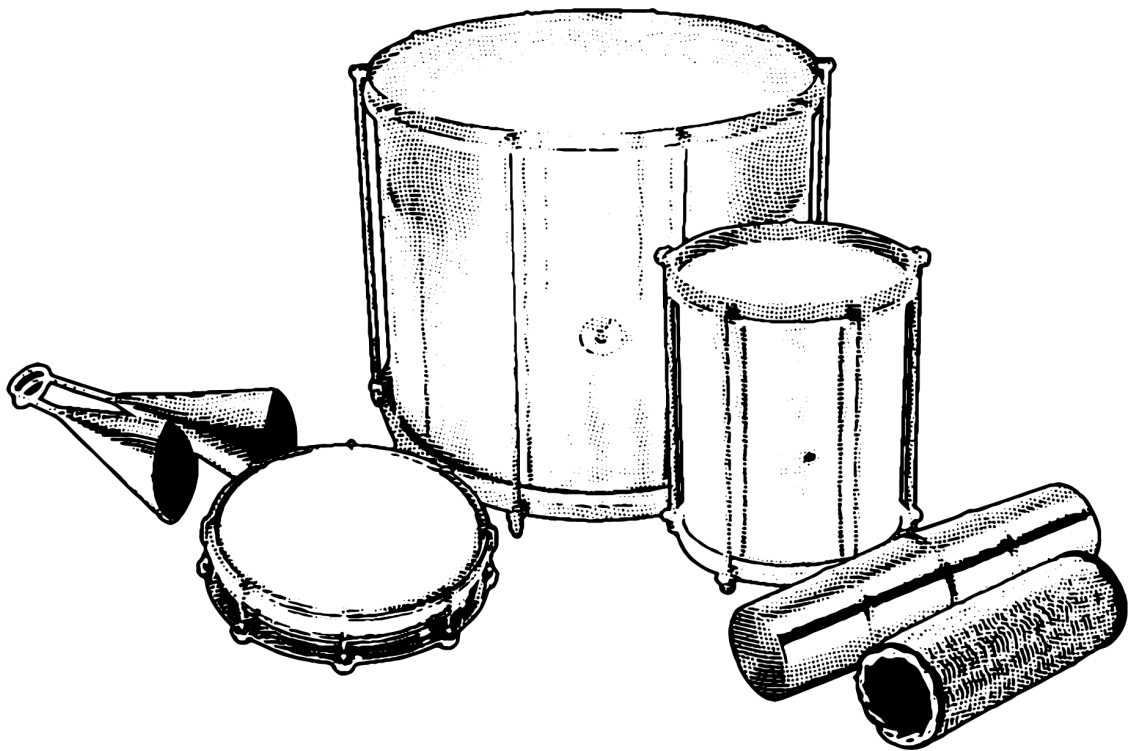
Musical notation for variation A, featuring a treble clef, common time signature (C), and a series of eighth notes with accents (>) on the upper staff. The lower staff shows a bass drum pattern with 'x' marks indicating the drum hits.

B

Musical notation for variation B, featuring a treble clef, common time signature (C), and a series of eighth notes with accents (>) on the upper staff. The lower staff shows a bass drum pattern with 'x' marks and a Hi-Hat pattern indicated by a bracketed 'x'.

C

Musical notation for variation C, featuring a treble clef, common time signature (C), and a series of eighth notes with accents (>) on the upper staff. The lower staff shows a bass drum pattern with 'x' marks and a Hi-Hat pattern indicated by a bracketed 'x'.



Trad. Samba Percussion: Agogo Bells, Tambourine, Surdo, Repinique, Ganza/Shaker