

Freedom! '90 (intermediate version)

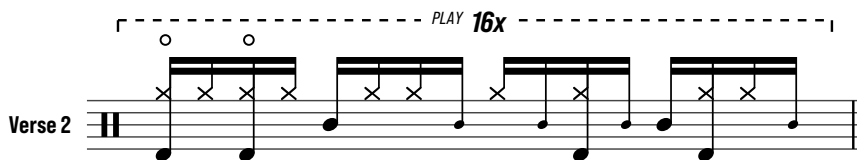
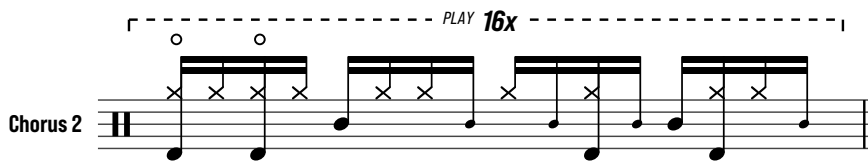
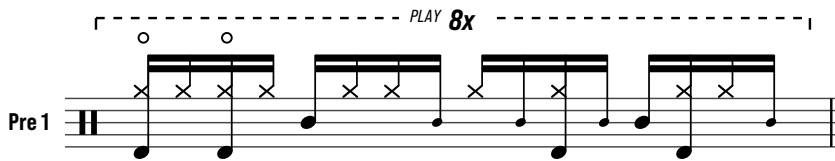
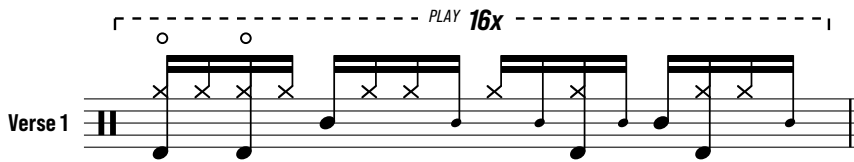
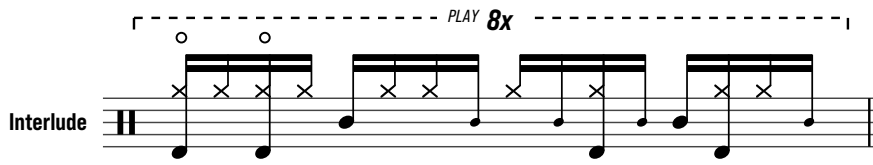
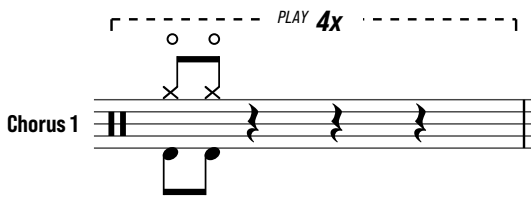
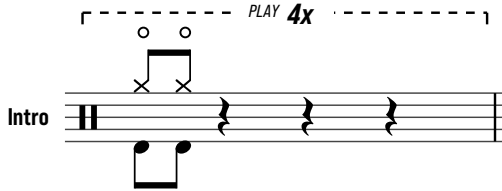
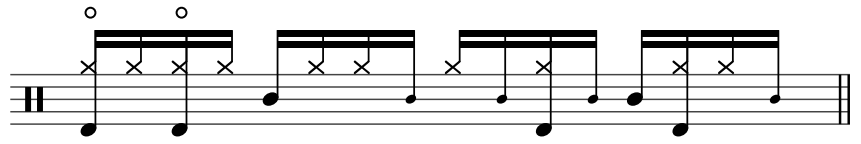
George Michael

Written by: George Michael

 = 90


Basic Groove

Play this to just jam along.
Have fun!



Pre 2


PLAY 8x



The Pre 2 section consists of a single staff with a treble clef and a key signature of one flat. It begins with a double bar line. The first two measures contain a pair of beamed eighth notes (G4 and A4) with an 'x' above each, and a pair of beamed eighth notes (B3 and C4) with an 'x' above each. The next two measures contain a pair of beamed eighth notes (D4 and E4) with an 'x' above each, and a pair of beamed eighth notes (F4 and G4) with an 'x' above each. The final two measures contain a pair of beamed eighth notes (A4 and B4) with an 'x' above each, and a pair of beamed eighth notes (C5 and B4) with an 'x' above each. A dashed line above the staff indicates the section ends after the eighth measure.

Chorus 3


PLAY 6x



The Chorus 3 section consists of a single staff with a treble clef and a key signature of one flat. It begins with a double bar line. The first two measures contain a pair of beamed eighth notes (G4 and A4) with an 'x' above each, and a pair of beamed eighth notes (B3 and C4) with an 'x' above each. The next two measures contain a pair of beamed eighth notes (D4 and E4) with an 'x' above each, and a pair of beamed eighth notes (F4 and G4) with an 'x' above each. The final two measures contain a pair of beamed eighth notes (A4 and B4) with an 'x' above each, and a pair of beamed eighth notes (C5 and B4) with an 'x' above each. A dashed line above the staff indicates the section ends after the sixth measure.

Groove


PLAY 8x



The Groove section consists of a single staff with a treble clef and a key signature of one flat. It begins with a double bar line. The first two measures contain a pair of beamed eighth notes (G4 and A4) with an 'x' above each, and a pair of beamed eighth notes (B3 and C4) with an 'x' above each. The next two measures contain a pair of beamed eighth notes (D4 and E4) with an 'x' above each, and a pair of beamed eighth notes (F4 and G4) with an 'x' above each. The final two measures contain a pair of beamed eighth notes (A4 and B4) with an 'x' above each, and a pair of beamed eighth notes (C5 and B4) with an 'x' above each. A dashed line above the staff indicates the section ends after the eighth measure.

Bridge

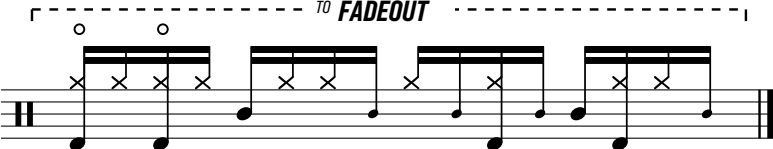
PLAY 16x



The Bridge section consists of a single staff with a treble clef and a key signature of one flat. It begins with a double bar line. The first two measures contain a pair of beamed eighth notes (G4 and A4) with an 'x' above each, and a pair of beamed eighth notes (B3 and C4) with an 'x' above each. The next two measures contain a pair of beamed eighth notes (D4 and E4) with an 'x' above each, and a pair of beamed eighth notes (F4 and G4) with an 'x' above each. The final two measures contain a pair of beamed eighth notes (A4 and B4) with an 'x' above each, and a pair of beamed eighth notes (C5 and B4) with an 'x' above each. A dashed line above the staff indicates the section ends after the eighth measure.

Chorus 4

TO FADEOUT



The Chorus 4 section consists of a single staff with a treble clef and a key signature of one flat. It begins with a double bar line. The first two measures contain a pair of beamed eighth notes (G4 and A4) with an 'x' above each, and a pair of beamed eighth notes (B3 and C4) with an 'x' above each. The next two measures contain a pair of beamed eighth notes (D4 and E4) with an 'x' above each, and a pair of beamed eighth notes (F4 and G4) with an 'x' above each. The final two measures contain a pair of beamed eighth notes (A4 and B4) with an 'x' above each, and a pair of beamed eighth notes (C5 and B4) with an 'x' above each. A dashed line above the staff indicates the section ends after the eighth measure.