

Get the Party Started (easy version)

 = 128

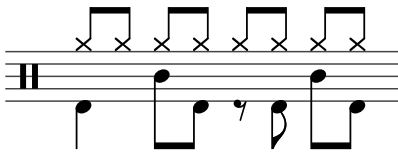
PINK

Written by: Linda Perry

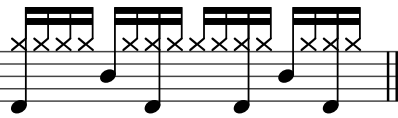
Basic Groove

Play this to just jam along.
Have fun!

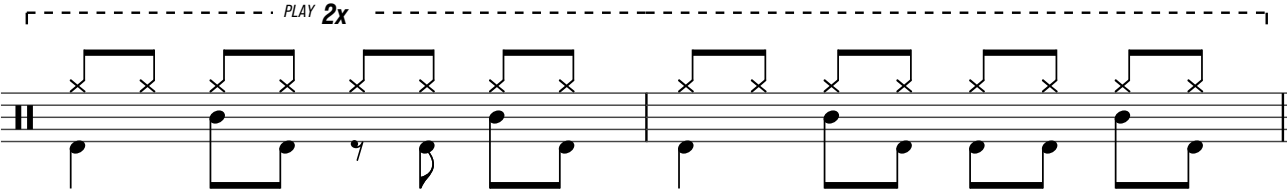
VERSE



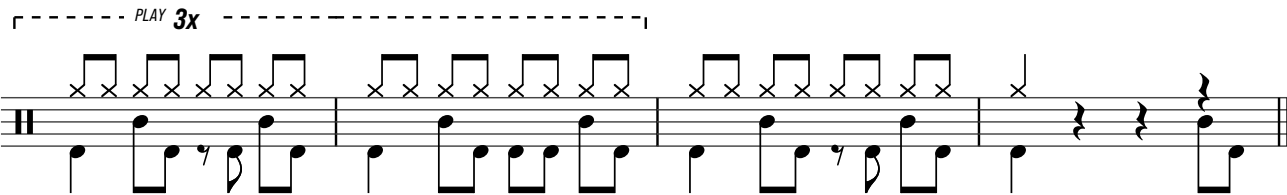
CHORUS



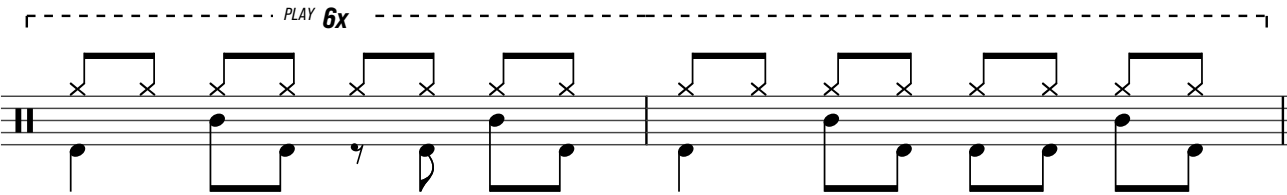
Intro



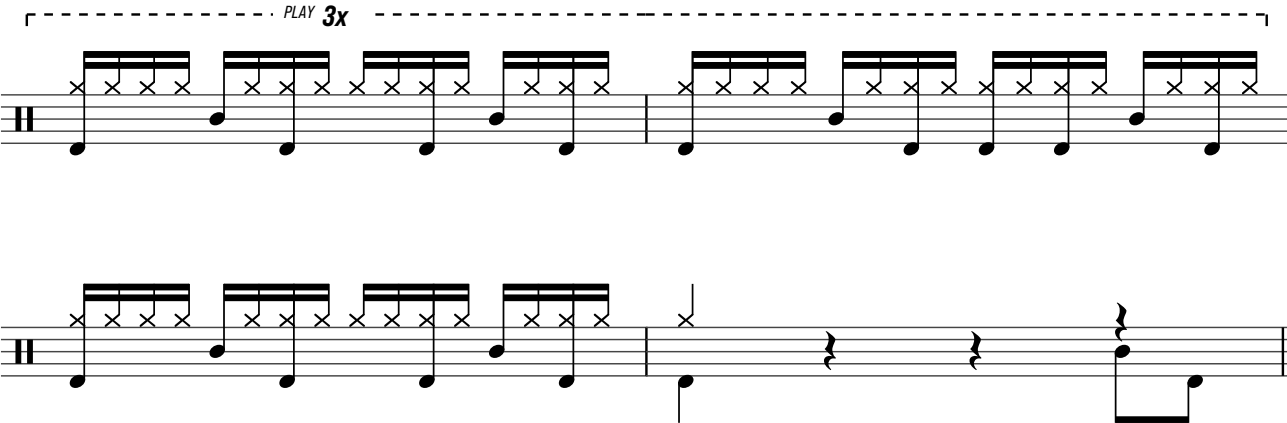
Chorus 1



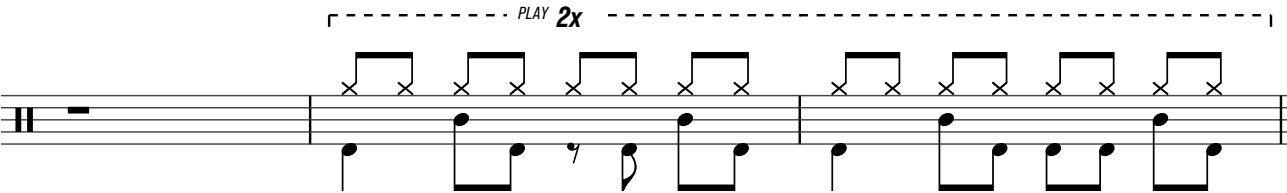
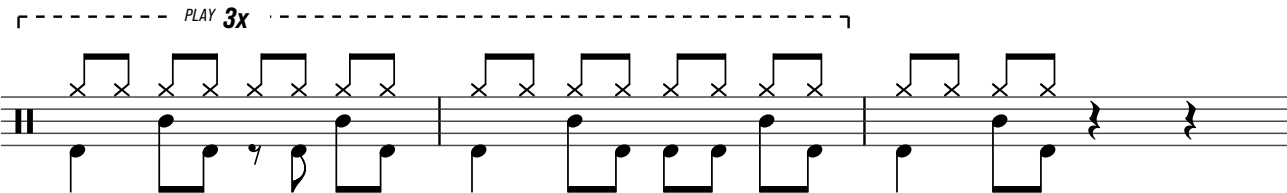
Verse 1



Chorus 2



Verse 2



Chorus 3

PLAY 3x

The musical notation for Chorus 3 consists of a single staff with a treble clef and a key signature of one sharp (F#). The melody is composed of eighth notes, with the first four measures each containing a triplet of eighth notes marked with 'x' symbols. The final measure of the chorus is a whole note. The instruction 'PLAY 3x' is written above the staff, indicating that the entire chorus should be repeated three times.

Interlude

PLAY 3x

The musical notation for the Interlude consists of a single staff with a treble clef and a key signature of one sharp (F#). The melody is composed of eighth notes, with the first three measures each containing a triplet of eighth notes marked with 'x' symbols. The final measure of the interlude is a whole note. The instruction 'PLAY 3x' is written above the staff, indicating that the entire interlude should be repeated three times.

Verse 3

PLAY 6x

The musical notation for Verse 3 consists of a single staff with a treble clef and a key signature of one sharp (F#). The melody is composed of eighth notes, with the first four measures each containing a triplet of eighth notes marked with 'x' symbols. The final measure of the verse is a whole note. The instruction 'PLAY 6x' is written above the staff, indicating that the entire verse should be repeated six times.

Chorus 4

PLAY 7x

The musical notation for Chorus 4 consists of a single staff with a treble clef and a key signature of one sharp (F#). The melody is composed of eighth notes, with the first four measures each containing a triplet of eighth notes marked with 'x' symbols. The final measure of the chorus is a whole note. The instruction 'PLAY 7x' is written above the staff, indicating that the entire chorus should be repeated seven times.

PLAY 4x

The musical notation for this section consists of a single staff with a treble clef and a key signature of one sharp (F#). The melody is composed of eighth notes, with the first four measures each containing a triplet of eighth notes marked with 'x' symbols. The final measure of the section is a whole note. The instruction 'PLAY 4x' is written above the staff, indicating that the entire section should be repeated four times.

The musical notation for this final section consists of a single staff with a treble clef and a key signature of one sharp (F#). The melody is composed of eighth notes, with the first four measures each containing a triplet of eighth notes marked with 'x' symbols. The final measure of the section is a whole note.