

Remember the Name (easy version)

♩ = 84

Fort Minor, Eminem, 50 Cent, Ed Sheeran

Written by: Fort Minor, Ryutaro Nakahara

VERSE

CHORUS

Basic Groove

Play this to just jam along.
Have fun!

Musical notation for the basic groove, showing the verse and chorus sections. The verse consists of two measures of eighth notes: G4, A4, B4, G4, F4, E4, D4, C4. The chorus consists of two measures of eighth notes: G4, A4, B4, G4, F4, E4, D4, C4, with 'x' marks above the notes in the second measure.

PLAY 15x

PLAY 8x

Verse 1

Musical notation for Verse 1, consisting of two measures of eighth notes: G4, A4, B4, G4, F4, E4, D4, C4. The first measure is followed by a rest, and the second measure is followed by a rest.

PLAY 2x

Musical notation for Verse 1 continuation, consisting of two measures of eighth notes: G4, A4, B4, G4, F4, E4, D4, C4. The first measure is followed by a rest, and the second measure is followed by a rest.

PLAY 8x

Chorus 1

Musical notation for Chorus 1, consisting of two measures of eighth notes: G4, A4, B4, G4, F4, E4, D4, C4. The first measure is followed by a rest, and the second measure is followed by a rest.

PLAY 4x

Verse 2

Musical notation for Verse 2, consisting of two measures of eighth notes: G4, A4, B4, G4, F4, E4, D4, C4. The first measure is followed by a rest, and the second measure is followed by a rest.

PLAY 8x

Musical notation for Verse 2 continuation, consisting of two measures of eighth notes: G4, A4, B4, G4, F4, E4, D4, C4. The first measure is followed by a rest, and the second measure is followed by a rest.

PLAY 8x

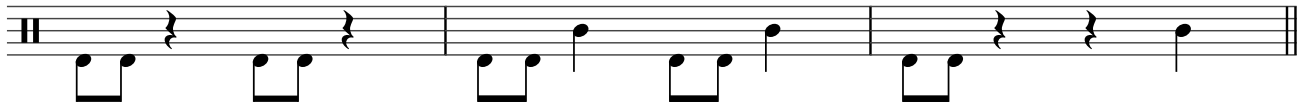
Chorus 2

Musical notation for Chorus 2, consisting of two measures of eighth notes: G4, A4, B4, G4, F4, E4, D4, C4. The first measure is followed by a rest, and the second measure is followed by a rest.

PLAY 6x

Verse 3

Musical notation for Verse 3, consisting of two measures of eighth notes: G4, A4, B4, G4, F4, E4, D4, C4. The first measure is followed by a rest, and the second measure is followed by a rest.



PLAY 4x

Chorus

